



2025 SMP Package II – Nelson Ave. from S. Palmetto St. to St. Anthony Ave.

SAWS construction work on this project will replace approximately 558 feet of existing sewer main with new 8-inch PVC sewer main. This work is required to replace deteriorating sewer infrastructure in this area.

When Will Work Occur?

Project construction is anticipated to begin near July 2024 with a total project duration of approximately 6 to 9 months.

Construction Elements:

- ✓ A traffic control plan, which may include a combination of detours and lane closures will be reviewed and approved by City of San Antonio Right of Way Department.
- ✓ The project site is located within a residential area.
- ✓ City of San Antonio work which may include asphalt and concrete work will follow after SAWS work is complete.
- ✓ Construction is along CoSA right of way.



For more information:

SAWS Public Relations:

Cecilia Picazo, 210-233-3750

Byron Gipson, 210-233-2977





2025 SMP Package II – St. Anthony Ave. from Nelson Ave. to Westfall Ave.

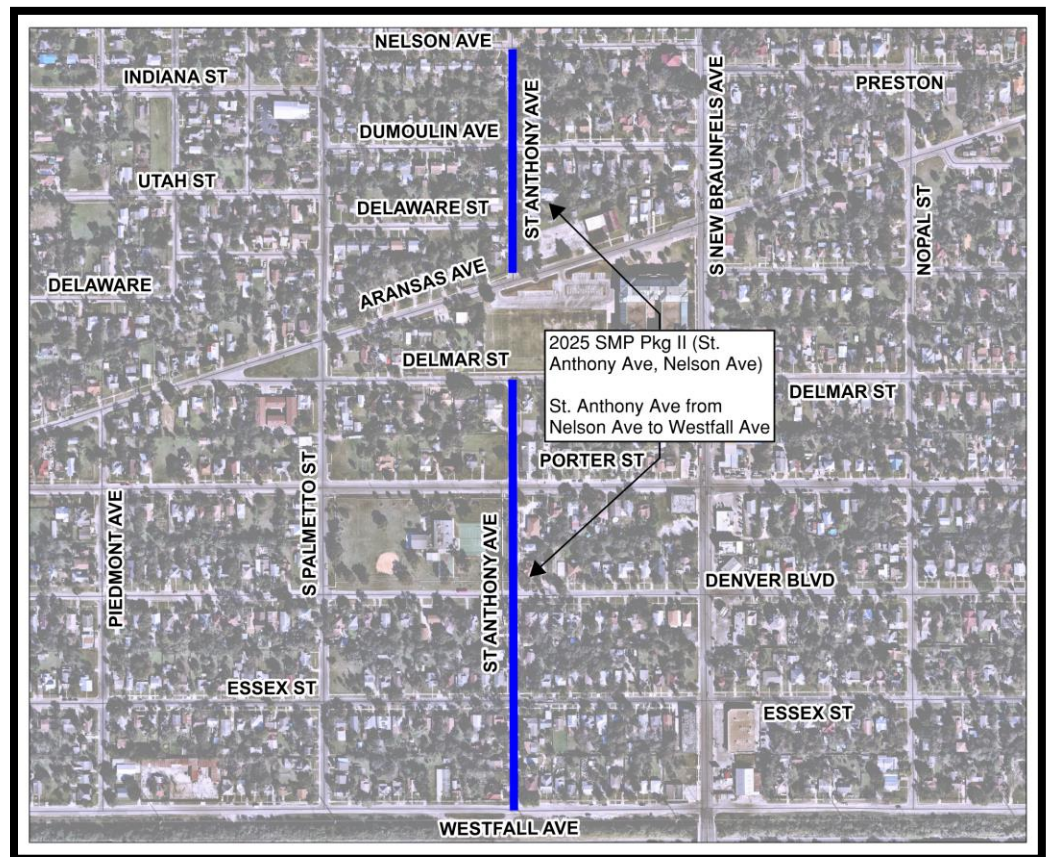
SAWS construction work on this project will replace approximately 1,628 feet of existing water main with new 6-inch, 8-inch, and 12-inch HDPE water main and approximately 550 LF of existing sewer main with new 8-inch PVC sewer main. This work is required to replace deteriorating water and sewer infrastructure in this area.

When Will Work Occur?

Project construction is anticipated to begin at the near July 2024 with a total project duration of approximately 6 to 9 months.

Construction Elements:

- ✓ A traffic control plan, which may include a combination of detours and lane closures will be reviewed and approved by City of San Antonio Right of Way Department.
- ✓ The project site is located within a residential area.
- ✓ City of San Antonio work which may include asphalt and concrete work will follow after SAWS work is complete.
- ✓ Construction is along CoSA right of way.



For more information:

SAWS Public Relations:

Cecilia Picazo, 210-233-3750

Byron Gipson, 210-233-2977

